



DATA SHEET 28 – FIG FT702 600 T STRAINER

SIZES: 2" to 36" NB

PRESSURE: ANSI CLASS 600

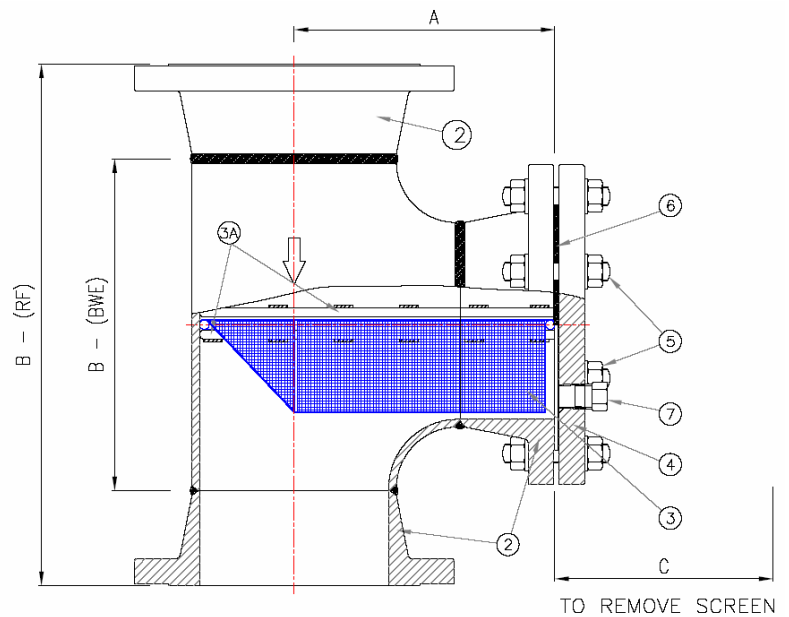
END CONNS: RF / RTJ / BW

STANDARDS: ASME B31.3
(ASME V111 or BS5500 on request)

CERTIFICATION: BSEN 10204 3.1
(Pressure containing/Balance materials)
2.1 balance of matis/NACE
PED 2014/68/EU (CE marked where applicable-Formerly 97/23/EC)
On request)

NDT: Hydro test only on RF
X Ray only on BW units
(MPI/DPI/PMI on request)

FINISH: None as welded
(Special paint finish or lining available on request)



Dimensions approx (mm)

NB	A	B - BW	B - RF	C	KG BW	KG RF
2"	159	127	267	188	13	20
3"	197	172	331	238	23	37
4"	225	210	382	275	38	62
6"	280	286	483	355	71	111
8"	333	356	578	432	109	171
10"	384	432	667	531	181	269
12"	438	508	768	587	256	420
14"	480	560	846	655	354	530
16"	511	610	902	714	449	675
18"	565	686	1004	790	553	821
20"	609	762	1086	859	888	1038
24"	673	864	1201	973	982	1458

- NOTES**
1. Drain plug – None as standard, NPT/SW/RF on request
 2. Standard screen – 3 mm perf. Mesh & Perf changes available on request
 3. Screens are not pressure retaining items and should not be exposed to a differential pressure in excess of 0.5 Bar G without our consent.
 4. Manufactured in the UK - Materials from UK stockists / world wide source

Materials of construction

ITEM	CARBON STEEL	STAINLESS STEEL
1 BODY (FABRICATED)	ASTM A234 WPB / A105N	ASTM A 312 Gr 316L SS
2 & 4 FLANGES/COVER	ASTM A105N	ASTM A182 F316L SS
3 SCREEN	304 STAINLESS STEEL	316 STAINLESS STEEL
3A GUIDE RODS	CARBON STEEL	316 STAINLESS STEEL
5 BOLTING	B7 / 2H	B8 / Gr 8
6 COVER GASKET	CNAF	CNAF
7 DRAIN PLUG (When fitted)	ASTM A105N	ASTM A182 F316L SS

- NOTES**
1. Other materials such 304LSS, LTC.S, Super Duplex, Titanium, Monel, CuNi, 6Mo, available on request
 2. Special gaskets / bolting available on request
 3. High pressure units available on request