



DATA SHEET 26 – FIG FT702 150 T STRAINER

SIZES: 2" to 36" NB

PRESSURE: ANSI CLASS 150

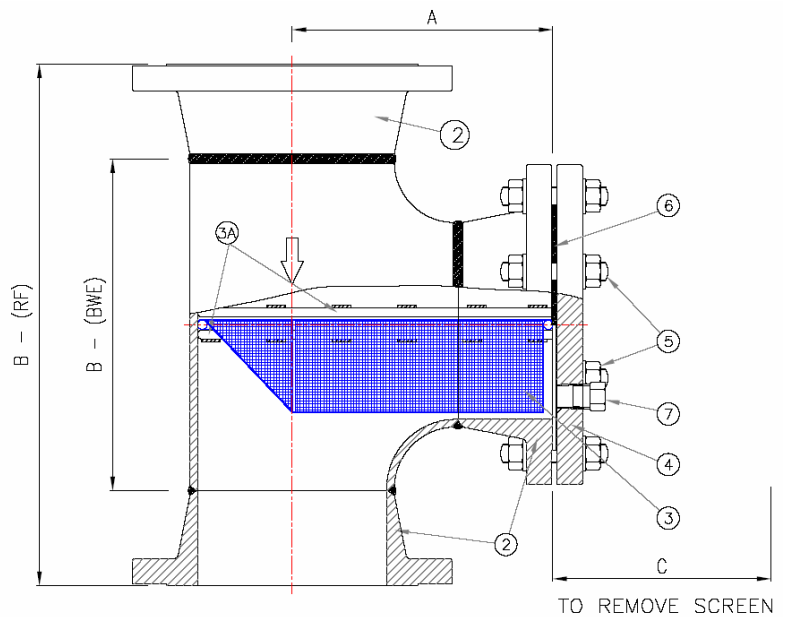
END CONNS: RF / RTJ / BW

STANDARDS: ASME B31.3
(ASME V111 or BS5500 on request)

CERTIFICATION: BSEN 10204 3.1
(Pressure containing/Balance materials)
2.1 balance of matis/NACE
PED 2014/68/EU (CE marked where applicable-Formerly 97/23/EC)
On request)

NDT: Hydro test only on RF
X Ray only on BW units
(MPI/DPI/PMI on request)

FINISH: None as welded
(Special paint finish or lining available on request)



Dimensions approx (mm)

NB	A	B - BW	B - RF	C	~KG BW	~KG RF
2"	148	127	254	170	9	15
3"	182	172	312	220	16	26
4"	207	210	363	250	24	38
6"	260	286	464	330	43	65
8"	310	356	559	360	71	107
10"	351	432	635	470	111	161
12"	403	508	737	550	161	239
14"	445	560	814	640	222	324
16"	472	610	864	670	273	393
18"	526	686	966	750	332	474
20"	572	762	1051	820	422	598
24"	635	864	1169	930	600	838
28"	723	1042	1293	1090	902	1204
30"	774	1118	1395	1065	1020	1350
36"	870	1346	1619	1260	1530	2010

- NOTES**
1. Drain plug – None as standard, NPT/SW/RF on request
 2. Standard screen – 3 mm perf. Mesh & Perf changes available on request
 3. Screens are not pressure retaining items and should not be exposed to a differential pressure in excess of 0.5 Bar G without our consent.
 4. Manufactured in the UK - Materials from UK stockists / world wide source
 5. Flanged dimension B ± 4mm

Materials of construction

ITEM	CARBON STEEL	STAINLESS STEEL
1 BODY (FABRICATED)	ASTM A234 WPB / A105N	ASTM A 312 Gr 316L SS
2 & 4 FLANGES/COVER	ASTM A105N	ASTM A182 F316L SS
3 SCREEN	304 STAINLESS STEEL	316 STAINLESS STEEL
3A GUIDE RODS	CARBON STEEL	316 STAINLESS STEEL
5 BOLTING	B7 / 2H	B8 / Gr 8
6 COVER GASKET	CNAF	CNAF
7 DRAIN PLUG (When fitted)	ASTM A105N	ASTM A182 F316L SS

- NOTES**
1. Other materials such 304LSS, LTC.S, Super Duplex, Titanium, Monel, CuNi, 6Mo, available on request
 2. Special gaskets / bolting available on request
 3. High pressure units available on request