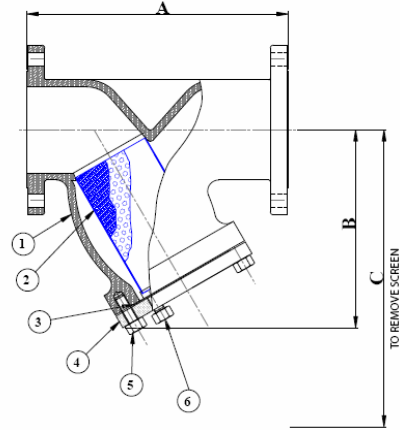




DATA SHEET: 13 – FIG Y700 - 150 Y TYPE STRAINER

SIZES: ½” to 24” NB
PRESSURE: ANSI CLASS 150
END CONNECTIONS: RF
STANDARDS: ANSI B16.10. ANSI B16.5.
CERTIFICATION: EN10204 3.1.B
 NACE MR01-75
 PED97/23/EC (CE marked)
NDT: Hydro test only
FINISH: Standard primer on WCB
 None on S/S
 Special paint finish or lining
 available on request



Dimensions approx (mm)

NB	A +/- 3mm	B (approx)	C (approx)	Drain	KG
½”	130	115	195	½” NPT	3
¾”	150	115	195	½” NPT	4
1”	160	115	195	½” NPT	5
1 ¼”	180	130	218	¾” NPT	7
1 ½”	200	135	267	¾” NPT	8
2”	203	150	292	¾” NPT	9
2 ½”	216	160	392	¾” NPT	13
3”	241	190	420	¾” NPT	15
4”	292	205	467	¾” NPT	24
6”	406	295	617	¾” NPT	50
8”	495	350	750	¾” NPT	78
10”	622	530	1110	¾” NPT	100
12”	698	610	1290	¾” NPT	210
14”	800	680	1450	1” NPT	300
16”	900	770	1620	1” NPT	600
18”	1000	860	1620	1” NPT	620
20”	1100	950	1995	1” NPT	810
24”	1300	1150	2420	1” NPT	1250

NOTES

- 1) Drain plug – Screwed. Flanged available on request Sizes: ½”-1”= ½”, 1¼”-12”= ¾”, >12”= 1”
- 2) Standard screen – 40 mesh. Other mesh or perf available on request
- 3) Screens are not pressure retaining items and should not be exposed to a differential pressure in excess of 0.5 Bar G without our consent.
- 4) Dim B & C are approx only, subject to confirmation

Materials of construction

ITEM	CARBON STEEL	STAINLESS STEEL
1 BODY (CAST)	ASTM A216 WCB	ASTM A351 CF8M
2 SCREEN	304 SS	316SS
3 COVER GASKET	Spiral wound 304SS / Non asbestos	Spiral wound 316SS / Non asbestos
4 COVER (FORGED)	ASTM A105N	ASTM A182 F316SS
5 BOLTING	B7 / 2H	B8 / Gr 8
6 DRAIN PLUG	ASTM A105N	ASTM A182 F316SS

NOTES

All data is subject to confirmation at the time of order. Our policy is one of continual improvement and we reserve the right to amend details without prior notice.